

CORRECTION

Open Access



# Correction to: SLC39A1 contribute to malignant progression and have clinical prognostic impact in gliomas

Peng Wang<sup>1†</sup>, Jingjing Zhang<sup>1†</sup>, Shuai He<sup>2</sup>, Boan Xiao<sup>1</sup> and Xiaobin Peng<sup>1\*</sup> 

**Correction to:** *Cancer Cell Int* (2020) 20:573

<https://doi.org/10.1186/s12935-020-01675-0>.

In the original publication of this article [1], there was an error in Fig. 2. Due to an oversight in the process of organizing the data, we have used the wrong image in Fig. 2e, f.

The incorrect and correct Fig. 2 are shown in this correction article.

---

<sup>†</sup>Peng Wang and Jingjing Zhang should be regarded as joint first authors.

---

The online version of the original article can be found at <https://doi.org/10.1186/s12935-020-01675-0>.

---

\*Correspondence:

Xiaobin Peng

[pengxb2007@163.com](mailto:pengxb2007@163.com)

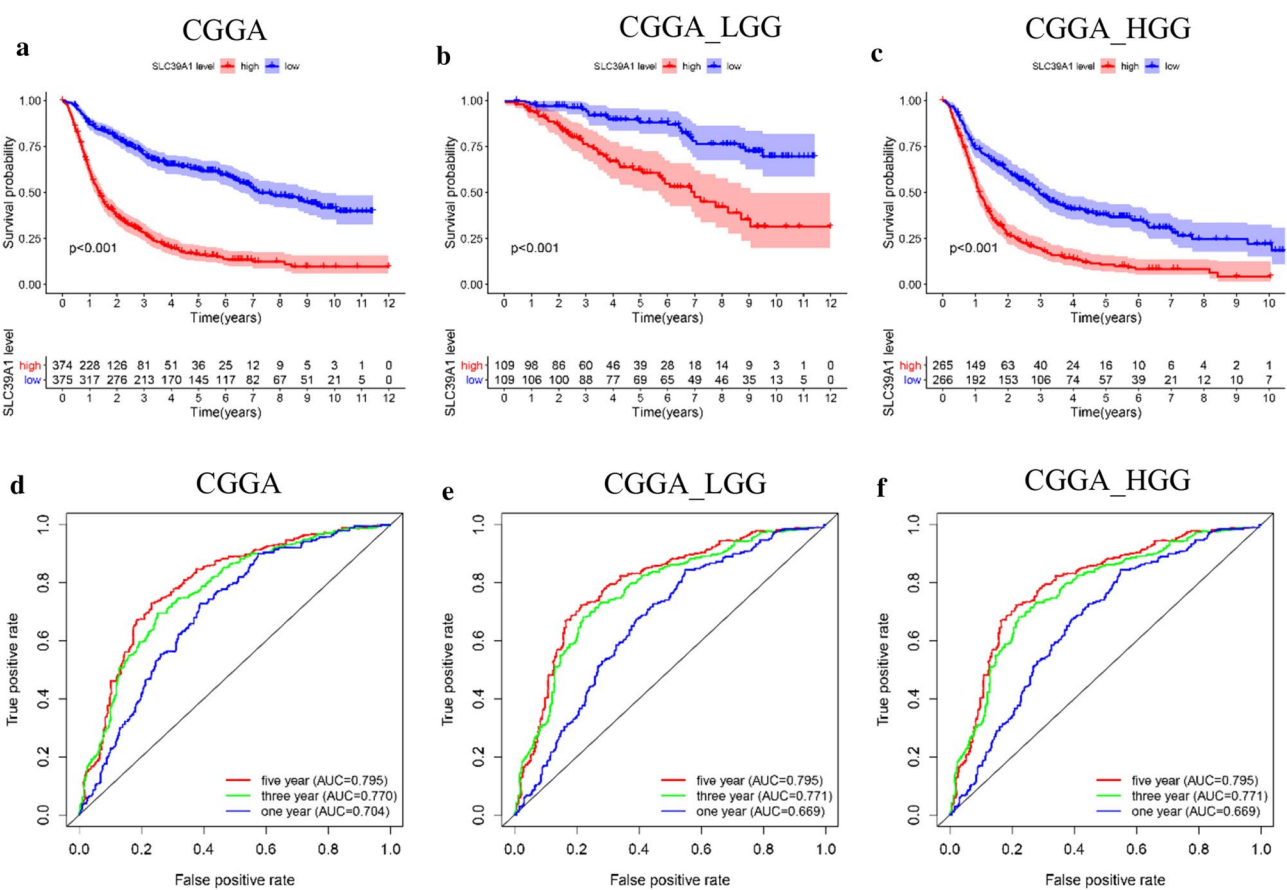
<sup>1</sup>The Fifth Affiliated Hospital of Southern Medical University, Guangzhou 510900, China

<sup>2</sup>Zhujiang Hospital, Southern Medical University, Guangzhou 510282, China

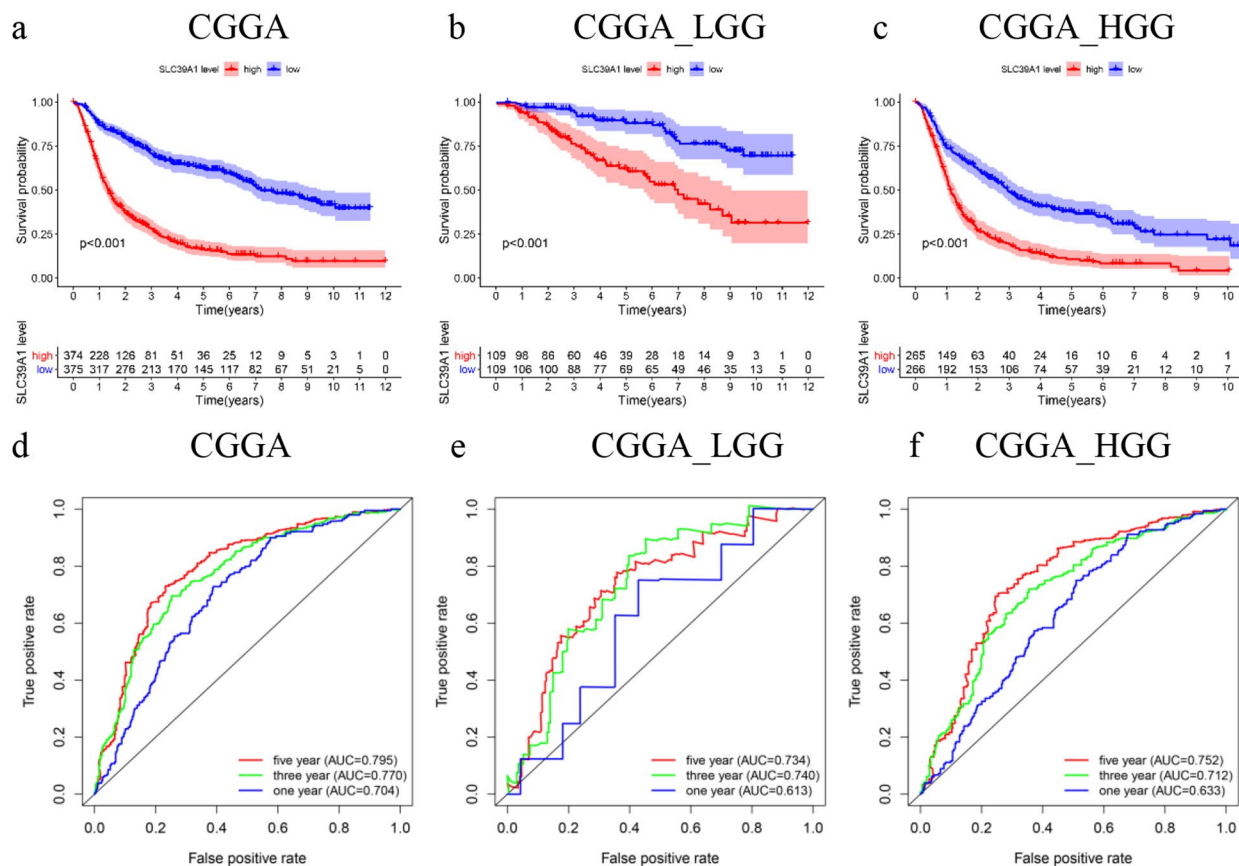


© The Author(s) 2024. **Open Access** This article is licensed under a Creative Commons Attribution 4.0 International License, which permits use, sharing, adaptation, distribution and reproduction in any medium or format, as long as you give appropriate credit to the original author(s) and the source, provide a link to the Creative Commons licence, and indicate if changes were made. The images or other third party material in this article are included in the article's Creative Commons licence, unless indicated otherwise in a credit line to the material. If material is not included in the article's Creative Commons licence and your intended use is not permitted by statutory regulation or exceeds the permitted use, you will need to obtain permission directly from the copyright holder. To view a copy of this licence, visit <http://creativecommons.org/licenses/by/4.0/>. The Creative Commons Public Domain Dedication waiver (<http://creativecommons.org/publicdomain/zero/1.0/>) applies to the data made available in this article, unless otherwise stated in a credit line to the data.

Incorrect Fig. 2.



Correct Fig. 2.



Accepted: 4 November 2024  
Published online: 10 November 2024

**Publisher’s note**  
Springer Nature remains neutral with regard to jurisdictional claims in published maps and institutional affiliations.

**Reference**  
1. Wang P, Zhang J, He S, Xiao B, Peng X. SLC39A1 contribute to malignant progression and have clinical prognostic impact in gliomas. *Cancer Cell Int.* 2020;20:1–5.