

CORRECTION

Open Access



Correction: Long non-coding RNA CCL14-AS suppresses invasiveness and lymph node metastasis of colorectal cancer cells by regulating MEP1A

Mingzhou Li^{1,2†}, Chengmei Huang^{1†}, Yuanyuan Wu^{2†}, Lina Zhu³, Yaxin Zhang¹, Yi Zhou¹, Huali Li^{1,2,3}, Zhihao Liu^{1,2,3}, Xinyan Pan¹, Xin Wang³, Junfeng Qiu^{2*}, Fengtian Li^{1*} and Wenting Liao^{1*}

Correction: *Cancer Cell International* (2023) 23:27

<https://doi.org/10.1186/s12935-023-02866-1>.

In this article [1], Fig. 5C right panel (SW620 panel): The image of wound healing assay in Vector (0 h) was duplicated with the image in CCL14-AS+ Vector (24 h).

The incorrect and correct Fig. 5 are given below:

[†]Mingzhou Li, Chengmei Huang and Yuanyuan Wu contribute equally to this work and share first authorship.

The online version of the original article can be found at <https://doi.org/10.1186/s12935-023-02866-1>.

*Correspondence:

Junfeng Qiu

475313968@qq.com

Fengtian Li

lift3@sysucc.org.cn

Wenting Liao

liaowt@sysucc.org.cn

¹State Key Laboratory of Oncology in South China, Collaborative Innovation Center for Cancer Medicine, Sun Yat-sen University Cancer Center, Guangzhou, China

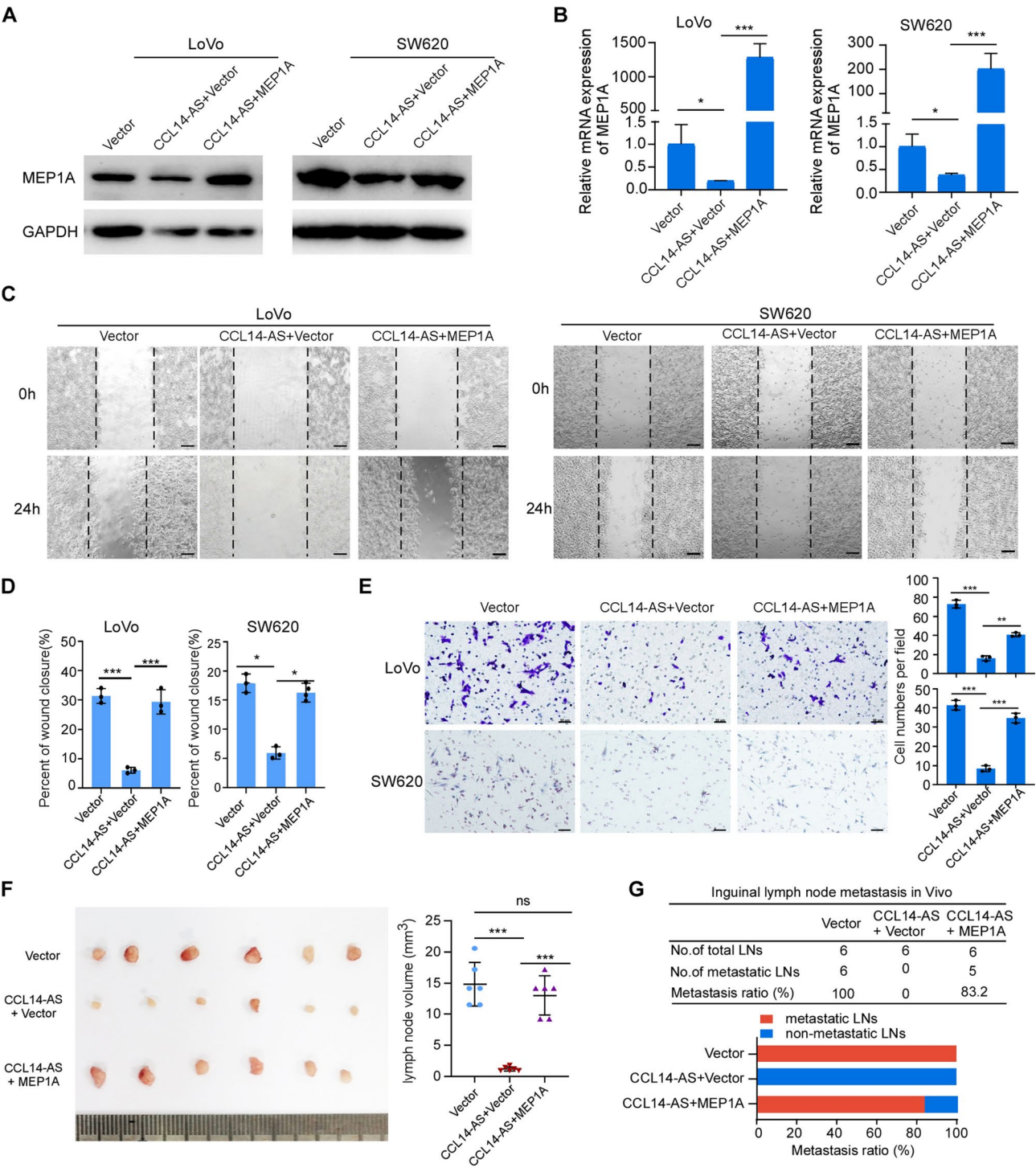
²Department of Pathology, Nanfang Hospital and School of Basic Medical Sciences, Southern Medical University, Guangzhou 510515, China

³Department of Biomedical Sciences, City University of Hong Kong, Hong Kong, China

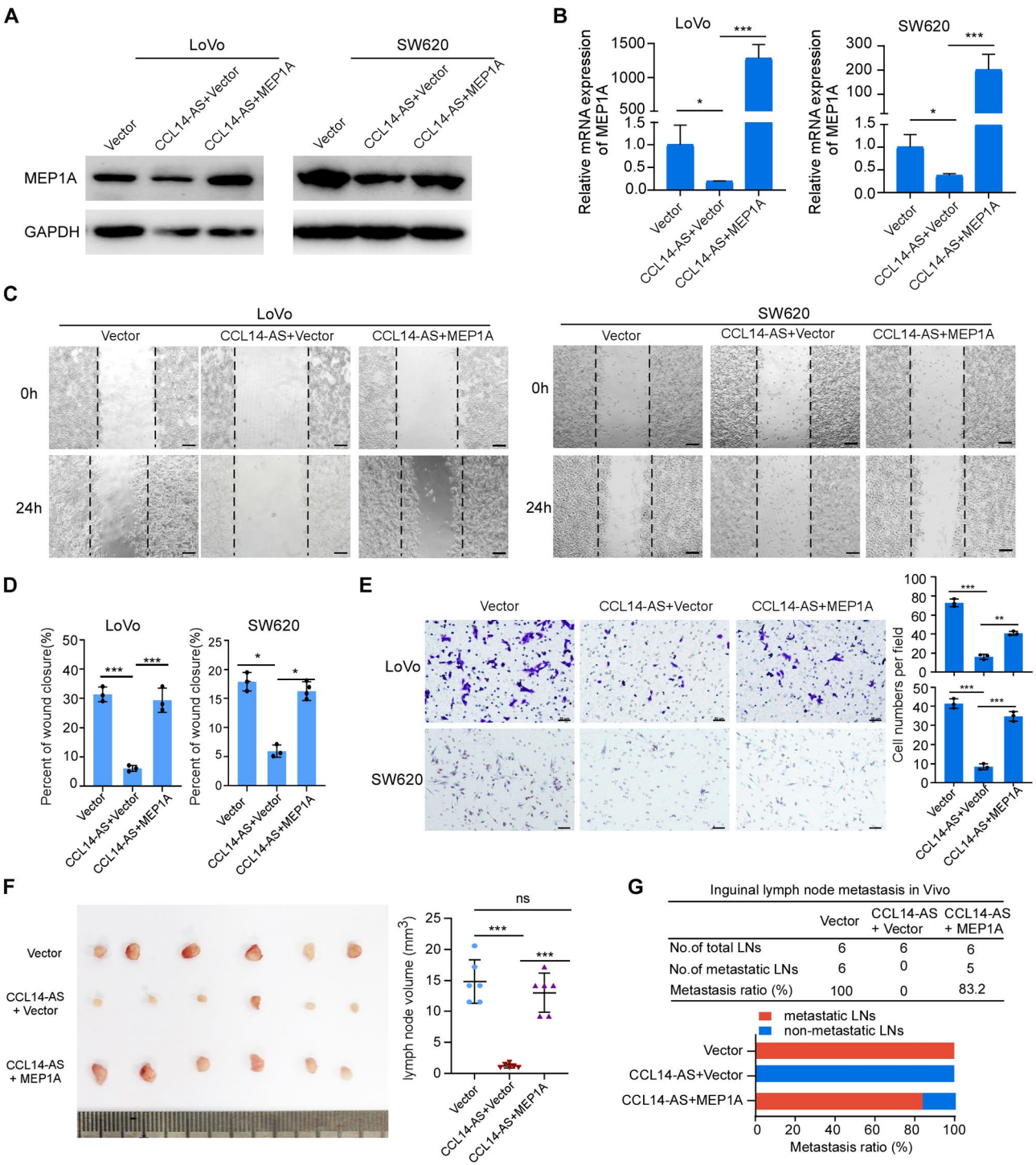


© The Author(s) 2024. **Open Access** This article is licensed under a Creative Commons Attribution 4.0 International License, which permits use, sharing, adaptation, distribution and reproduction in any medium or format, as long as you give appropriate credit to the original author(s) and the source, provide a link to the Creative Commons licence, and indicate if changes were made. The images or other third party material in this article are included in the article's Creative Commons licence, unless indicated otherwise in a credit line to the material. If material is not included in the article's Creative Commons licence and your intended use is not permitted by statutory regulation or exceeds the permitted use, you will need to obtain permission directly from the copyright holder. To view a copy of this licence, visit <http://creativecommons.org/licenses/by/4.0/>. The Creative Commons Public Domain Dedication waiver (<http://creativecommons.org/publicdomain/zero/1.0/>) applies to the data made available in this article, unless otherwise stated in a credit line to the data.

Incorrect Fig. 5:



Correct Fig. 5:



Accepted: 21 November 2024

Published online: 28 December 2024

Publisher's note

Springer Nature remains neutral with regard to jurisdictional claims in published maps and institutional affiliations.

References

1. Li M, Huang C, Wu Y, Zhu L, Zhang Y, Zhou Y, Li H, Liu Z, Pan X, Wang X, Qiu J. Long non-coding RNA CCL14-AS suppresses invasiveness and lymph node metastasis of colorectal cancer cells by regulating MEP1A. *Cancer Cell Int*. 2023;23(1):27.